

HYDRAULIC EXPANSION CHUCK

FOR TOOL GRINDING

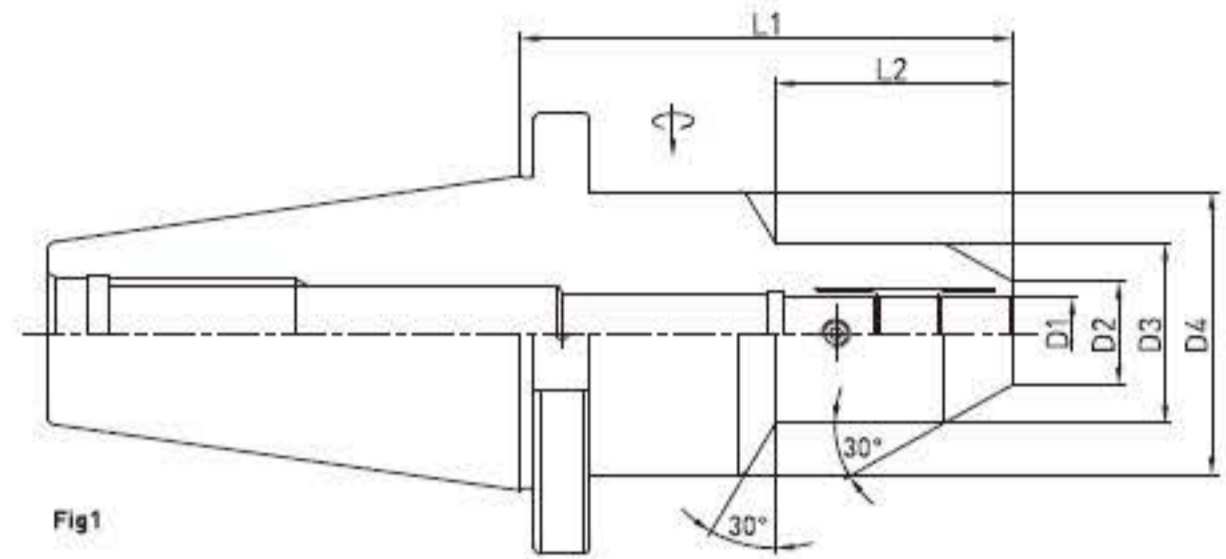


Fig1

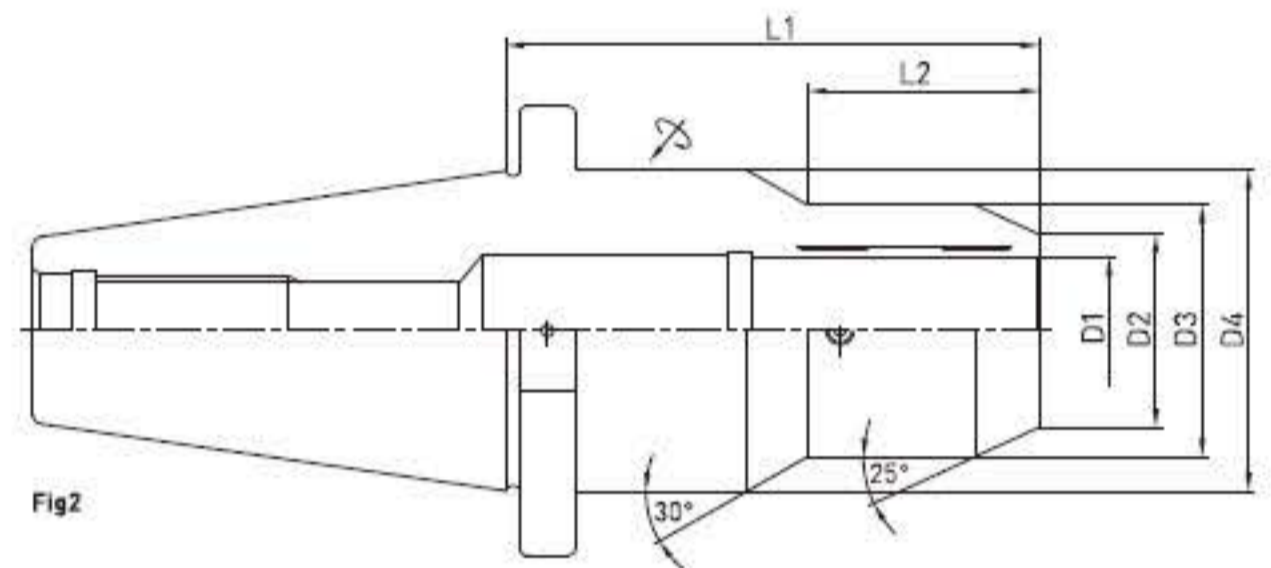


Fig2

Taper AT3 T.I.R $\geq 3\mu\text{m}/3xD$ Bal./rpm G2.5/20000 Coolant AD mm

CODE NO.	D1	D2	D3	D4	L1	L2	TYPE
JHM6-105	6	14	36	63	105	55	Fig1
JHM8-105	8	16	36	63	105	55	Fig1
JHM10-105	10	18	36	63	105	55	Fig1
JHM12-105	12	20	36	63	105	55	Fig1
JHM14-105	14	22	36	63	105	55	Fig1
JHM16-105	16	24	40	63	105	55	Fig1
JHM18-105	18	27	42	63	105	55	Fig1
JHM20-105	20	29	45	63	105	55	Fig1
JHM25-105	25	34	50	63	105	55	Fig1
JHM32-115	32	42	55	70	115	50	Fig2

NOTE

- 유압척에 절삭공구 Chucking시에 $\varnothing 6 \sim \varnothing 32$ 의 절삭공구 상크는 툴공차 h6 안에 들어오는 절삭공구를 사용.
- 유압척 $\varnothing 12, \varnothing 20, \varnothing 32$ 형 사용시에는 D or OD Collet을 이용하여 다양한 사이즈의 절삭공구를 사용할 수 있음.

- Tolerance of cutting tool shank should be configured within h6
- ID(Inner bore) size can reducible by using reduction sleeve
D12/D20/D32/OD12/OD20/OD32
- 3. Balancing Grade : HSK40, 50, 63 – G2.5/20,000rpm
HSK100 – G 2.5/15,000rpm