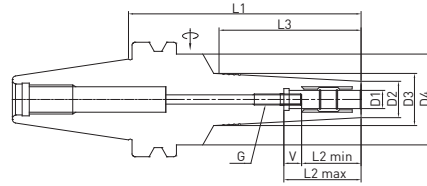


HYDRAULIC EXPANSION CHUCK SLIM LINE

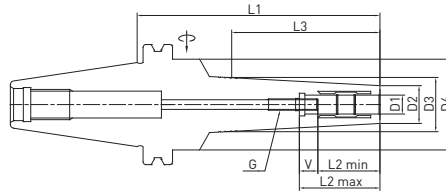
MAS403-BT-SJHM



Taper T.I.R Bal./rpm Coolant

CODE NO.	D1	D2	D3	D4	L1	L2	L2min	V	L3	G
BT30	SJHM 6-120	6	16	24.3	45	120	37.5	27.5	78	M5X0.8P
	SJHM 8-120	8	18	26.3					78	
	SJHM 10-120	10	20	28.4					79	
	SJHM 12-120	12	22	30.4					79	
	SJHM 14-120	14	24	32.5			80	M6X1.0P		
	SJHM 16-120	16	26	34.5			80			
	SJHM 18-120	18	29	37.6			81			
	SJHM 20-120	20	31	39.6			81			
BT40	SJHM 6-130	6	16	24.6	50	130	37.5	27.5	81	M5X0.8P
	SJHM 8-130	8	18	26.6					81	M6X1.0P
	SJHM 10-130	10	20	28.7					82	
	SJHM 12-130	12	22	30.7					82	
	SJHM 14-130	14	24	32.8			83	M8X1.0P		
	SJHM 16-130	16	26	34.8			83			
	SJHM 18-130	18	29	37.9			84			
	SJHM 20-130	20	31	39.9			84			

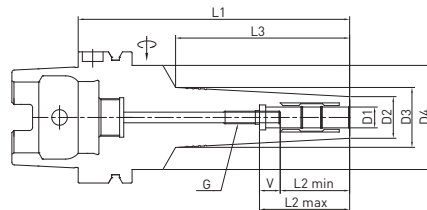
DIN69871-SK-SJHM



Taper T.I.R Bal./rpm Coolant

CODE NO.	D1	D2	D3	D4	L1	L2	L2min	V	L3	G
SK40	SJHM 6-130	6	16	25.5	48	130	37.5	27.5	90	M5X0.8P
	SJHM 8-130	8	18	27.5					90	M6X1.0P
	SJHM 10-130	10	20	29.6					91	
	SJHM 12-130	12	22	31.6					91	
	SJHM 14-130	14	24	33.7			92	M8X1.0P		
	SJHM 16-130	16	26	35.7			92			
	SJHM 18-130	18	29	38.9			93			
	SJHM 20-130	20	31	40.9			93			

DIN69893-HSK-SJHM



Taper T.I.R Bal./rpm Coolant

CODE NO.	D1	D2	D3	D4	L1	L2	L2min	V	L3	G
HSK63A	SJHM 6-130	6	16	24.7	50	130	37.5	27.5	82	M5X0.8P
	SJHM 8-130	8	18	26.7					82	M6X1.0P
	SJHM 10-130	10	20	28.8					83	
	SJHM 12-130	12	22	30.8					83	
	SJHM 14-130	14	24	32.9			84	M8X1.0P		
	SJHM 16-130	16	26	34.9			84			
	SJHM 18-130	18	29	38			85			
	SJHM 20-130	20	31	40			85			

NOTE

- 유압척에 절삭공구 Chucking시에 $\phi 6 \sim \phi 20$ 의 절삭공구 상크는 톨공차 h6 안에 들어오는 절삭공구를 사용.
- 유압척 $\phi 12$, $\phi 20$ 형 사용시에는 D or OD Collet을 이용하여 다양한 사이즈의 절삭공구를 사용할 수 있음.
- Tolerance of cutting tool shank should be configured within h6
- ID (Inner bore) size can reducible by using reduction sleeve D12/D20/OD12/OD20