

Type: single vice

ESS

View
on-line:



System:

A clamping slider clamps with a continuous spindle against a fixed jaw.

Versions:

ESS-M

Mechanical clamping range adjustment and force build-up

ESS-M-HD

Mechanical clamping range adjustment and mechanical-hydraulic force build-up

ESS-HD

Mechanical clamping range adjustment and hydraulic force build-up

ESS-FV

Fixed jaw forward at operating side for easy mounting of heavy workpieces

Single vice – unrivalled versatility and economy

ON REQUEST:



Bed length up to
1,200 mm

OPTIONAL:



Flat bed version
on request (p. 8)

Optionally, front or rear

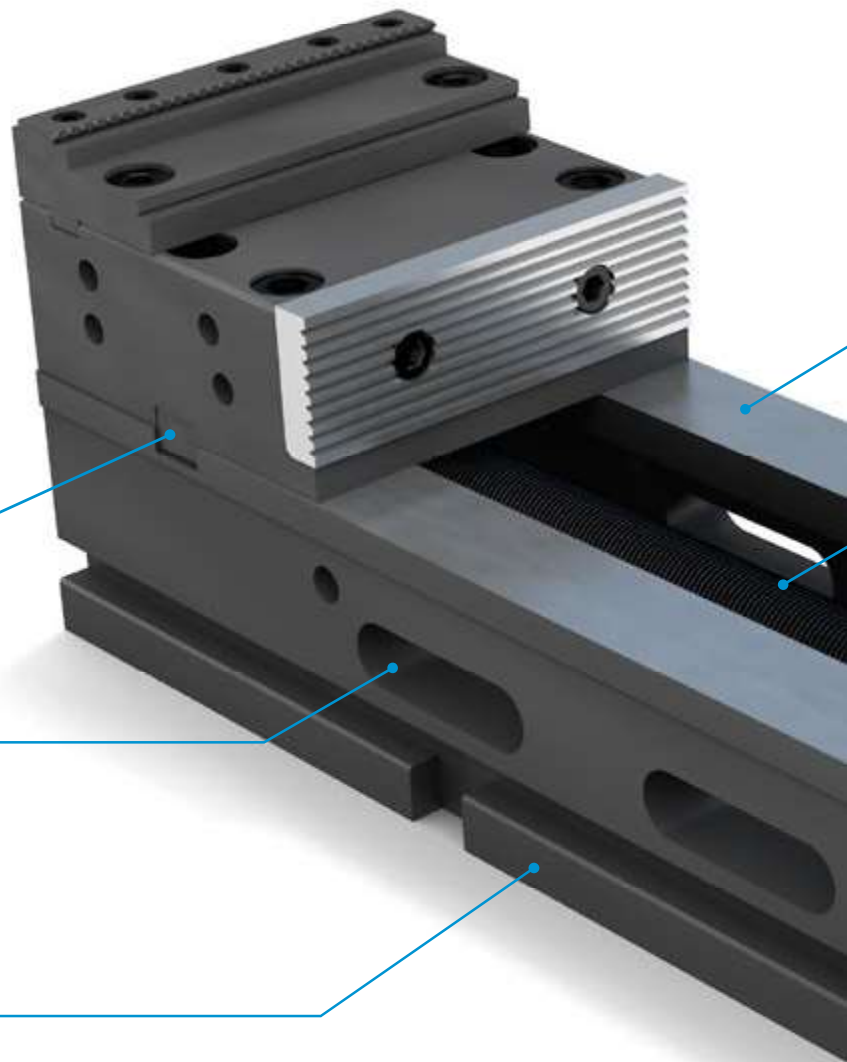
For optimum loading
select front or rear
fixed jaw.

Optimised

coolant and chip flow

Optional: tiltable

Tempered and smoothed sides
for maximum flexibility



Impressive advantages:

- Repeat accuracy ≤ 0.01 mm
- Fixed jaws secured on all levels (X,Y,Z)
- Can be used horizontally and vertically (on the tower)
- Large clamping range due to stepped jaw attachments
- Basic equipment: 2 screw-in jaws and 1 hand crank

Suitable accessories you can find starting from page 96

Multi-clamping

Usage of changeover sliders enable more workpieces to be clamped.
No tools required for assembly

Seamless clamping range

for clamping width adjustment through a continuous spindle

very best repeating accuracy

Clamping slider and spindle nut made of one piece

Grease nipple

Grease nipple for lubrication of the clamping slider guideway

Manual, hydraulic or mechanical-hydraulic

Depending on requirements: boost your productivity





ESS-M & ESS-HD

Single vice, mechanical or hydraulic version, *Fixed jaw on the rear* (opposite the operator side)

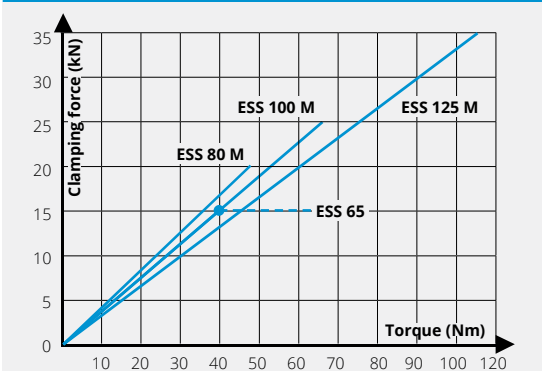


Suitable accessories you can find starting from page 96

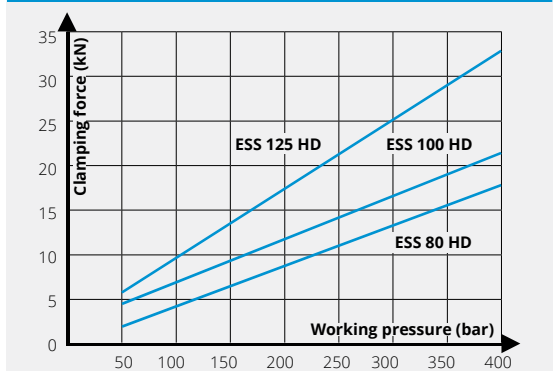
Impressive advantages:

- ESS-HD: Option for quick adjustment spindle for rapid moves of the clamping slider (no vertical clamping possible). Clamping force adjustment via hydraulic pressure
- Option: Mounting holes and holes for your zero-point clamping
- Option for longitudinal groove

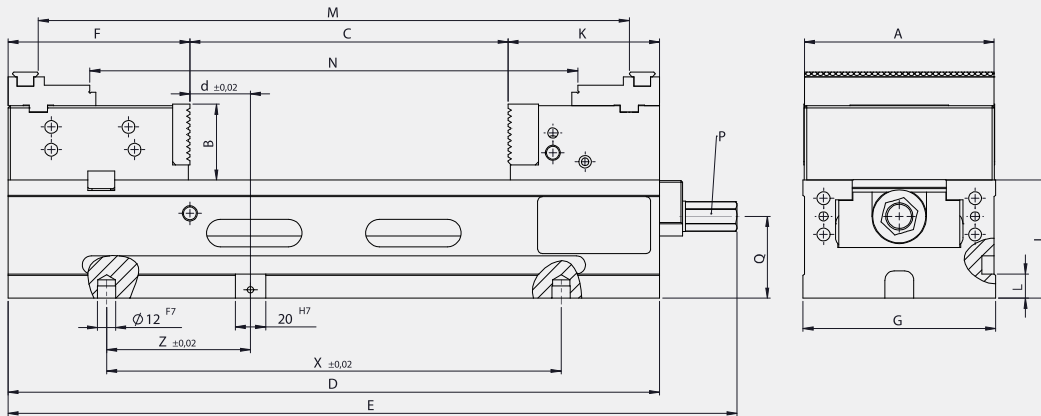
Clamping force diagram M



Clamping force diagram HD



Technical drawing



Technical specifications

Jaw width	A	65	80	100	125
Order No. mechanical		01211	01311	01411	01511
without jaws		01211000100	01311000100	01411000100	01511000100
Order No. hydraulic		-	01331	01431	01531
without jaws		-	01331000100	01431000100	01531000100
Clamping depth	B	25	32	44	50
Span	C	0-99	0-173	0-180	0-210
Bed length	D	220	300	360	430
Overall length	E	260	345 (HD 330)	404 (HD 392)	481 (HD 472)
Fixed jaw	F	65.5	63.5	100	120
Base width	G	78	84	104	127
Overall height	H	63	100	122	128
Bed height	J ^{h7}	38	68	78	78
Clamping slide length	K	55.5	63.5	80	100
	L	10	12	14	16
Hexagonal connection SW	P	10	12	14	17
	Q	23	51	58	54
	d	20	20	40	40
	X	150	150	300	300
	Z	50.5	0	120	95
Span with stepped jaw attachments	M	-	95-268	148-328	180-390
	N	-	39-212	92-272	112-322
Clamping stroke	mm	-	4-5	4-5	4-5
Mechanical clamping force	kN/Nm	15/40	20/48	25/64	35/115
Hydraulic clamping force	kN/380 bar	-	15	20	30
Weight	kg	5	11.5	21	36



ESS-FV M-HD

Single vice, mechanical-hydraulic booster, "fixed jaw on the front" *(on the operator side)*

Suitable accessories you can find starting from page 96



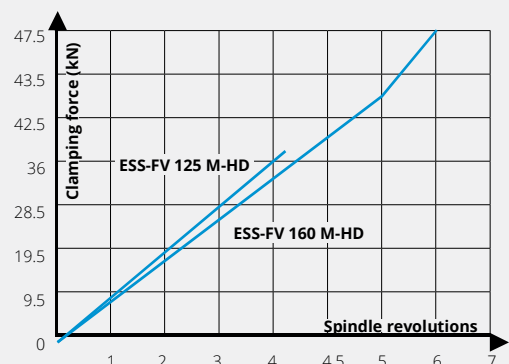
Ergonomic vice

easy to operate with great clamping force

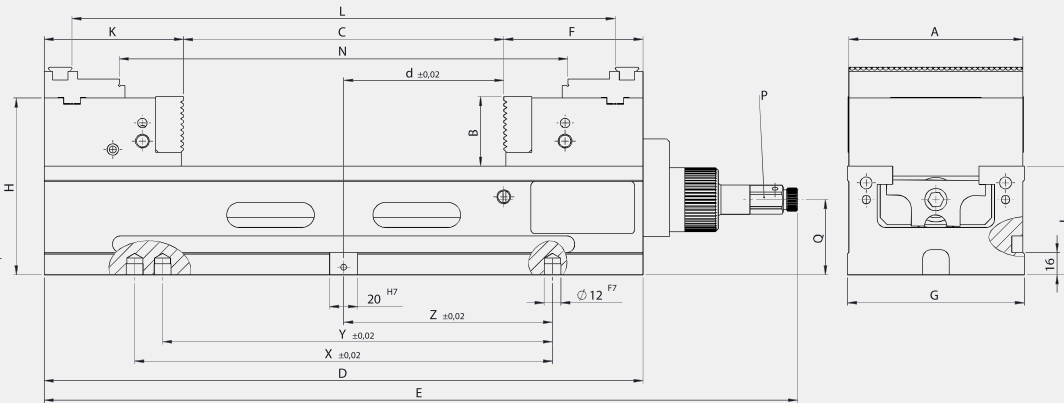
Impressive advantages:

- ▣ Fixed jaw on the operator side: Best handling for the machine operator, ideal for great Y-travel distance
- ▣ Option: Mounting holes and holes for zero-point clamping
- ▣ Clamping force via marking rings readable

Clamping force diagram



Technical drawing



Technical specifications

Jaw width	A	125					160			
Order No.		01520-FV	01521-FV	01522-FV	01523-FV	01524-FV	01620-FV	01621-FV	01622-FV	01623-FV
Clamping depth	B	50					54			
Bed length	D	430	500	560	680	740	600	750	900	1050
Overall length	E	545	615	675	795	855	714	864	1014	1164
Span	C	0-230	0-300	0-360	0-480	0-540	0-342	0-492	0-642	0-792
Fixed jaw	F	100					130			
Base width	G	127					162			
Overall height	H	128					144			
Bed height	J h7	78					90			
Clamping slide	K	100					126			
Top stepped jaws	L	160-390	160-460	160-520	160-640	160-700	204-546	204-696	204-846	204-996
	N	92-322	92-392	92-452	92-572	92-632	134-476	134-626	134-776	134-926
Hexagonal connection SW	P	19					19			
	Q	54					64			
	d	115	150	180	240	270	170	245	320	395
	X	300	400	400	500	500	500	500	500	500
	Y	280	-	-	480	480	-	480	480	480
	Z	150	200	200	250	250	250	250	250	250
Clamping force	kN	38					47.5			
Weight	kg	35	39	42	47	50	68	78	88	98



ESS-FV HD

Single vice, hydraulic force regulation, *"fixed jaw on the front"* (on the operator side)

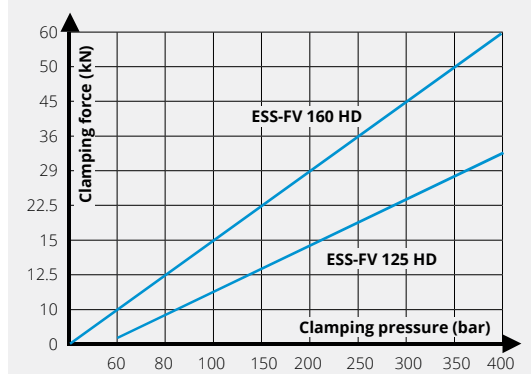
Suitable accessories you can find starting from page 96



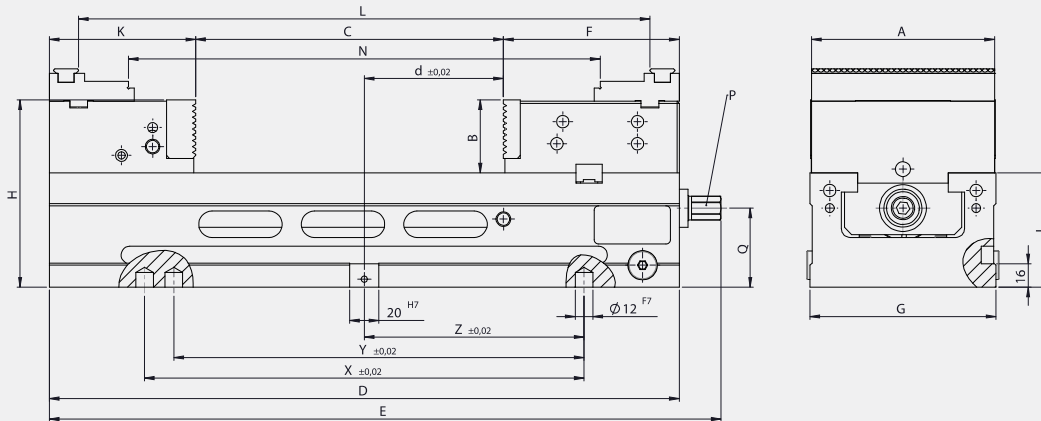
Impressive advantages:

- ▣ Fixed jaw on the operator side: best handling for the machine operator, ideal for great Y-travel distance
- ▣ The clamping force is adjusted via the hydraulic pressure.
- ▣ ESS-HD: Option for quick adjustment spindle for rapid moves of the clamping slider (no vertical clamping possible).
- ▣ Option: Mounting holes and holes for zero-point clamping

Clamping force diagram



Technical drawing



Technical specifications

Jaw width	A	125					160			
Order No.		01530-FV	01531-FV	01532-FV	01533-FV	01534-FV	01630-FV	01631-FV	01632-FV	01633-FV
Clamping depth	B	50					54			
Bed length	D	430	500	560	680	740	600	750	900	1050
Overall length	E	463	533	593	713	773	647	797	947	1097
Span	C	0-210	0-280	0-340	0-460	0-520	0-325	0-475	0-625	0-775
Fixed jaw	F	120					146.5			
Base width	G	127					162			
Overall height	H	128					144			
Bed height	J h7	78					90			
Clamping slide	K	100					126			
False jaws	L	180-390	180-460	180-520	180-640	180-700	221-529	221-679	221-829	221-979
	N	112-322	112-392	112-452	112-572	112-632	151-478	151-628	151-778	151-928
Hexagonal connection SW	P	14					17			
	Q	54					64			
	d	95	130	160	220	250	153.5	228.5	303.5	378.5
	X	300	400	500	500	500	400	500	500	500
	Y	280	-	480	480	480	-	480	480	480
	Z	150	200	200	250	250	200	250	250	250
Clamping stroke		4					4			
Clamping force hydraulic	kN/ 380 bar	30					55			
Weight	kg	46	51	55	63	67	72	82	93	103

